



[Home](#) [About Us](#) [Almond Growers](#) [Beekeepers](#) [Blue Orchard Bees](#) [Hive Inspections](#) [Resources](#)

## Blue Orchard Bees



**Educate Yourself!** [Click here](#) for information regarding the guidelines for the management of Blue Orchard Bees.

As the cost of pollination continues to rise and the supply of good quality beehives continue to decrease, we are always looking for other pollination alternatives for our almond growers. The Blue Orchard Bees have proven to be a successful supplemental alternative to the traditional pollination process. Blue Orchard Bees are not new to the pollination world; they are solitary bees that are native to the Pacific Northwest.

Despite their 'once a year' pollination cycle, The Blue Orchard bees have still yielded very successful results. We started utilizing Blue Orchard Bees by focusing on small or organic almond orchards and are today successfully providing the blue orchard bees to supplement pollination which previously utilized honey bees.

The Blue Orchard Bees are also very viable financial alternative. We can provide our clients with BOB's for about the same price as the honey bees.

The challenge is to have the supply to accommodate the need. BOB's come out of hibernation once a year, rebuild their nests and go back into hibernation. Timing is very crucial for incubation and to have the bees ready for almond pollination. Due to the limited supply of the BOB's, we offer them to our clients on a 'First Come, First Serve' basis. To ensure that you get your bees on time, we also require full payment at the time of placing the order and executing the contract.

If you are interested in Blue Orchard Bees for your almond pollination, call The Pollination Connection now to discuss the Blue Orchard Bees as a viable supplement to your existing pollination strategy.

## Testimonials



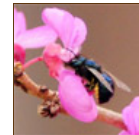
"We used Denise's Blue Orchard Bees the bloom of 2010 in partnership with Honey Bees. It was nice having the bee shelters in

between the trees and inside the orchard rather than around the perimeter of the orchard like the honey bees, which seems like no matter where you place them, there still in the way. One other thing thats cool about Blue Orchard Bees besides flying in lower temperatures is that they don't sting you!"

### David Tyler

Wend-Tyler Winery

[www.wendtylerwinery.com](http://www.wendtylerwinery.com)



"Denise has been great to work with and would recommend her to any beekeeper or almond grower. She is very trust

worthy and I use her exclusively to broker my Blue Orchard Bees. I can count on Denise to make the right decision for the almond growers and me. She is diligent, aggressive and gets the job done right."

### Todd Stutzman

Blue Orchard Beekeeper

Canby, OR

[www.wendtylerwinery.com](http://www.wendtylerwinery.com)

